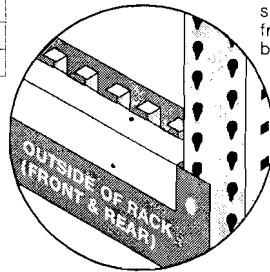


Straight and Knuckled High Profile Span-Track install on pallet rack beams. For each type of carton, install the first level of track following the instructions below and test for pitch before installing additional levels.

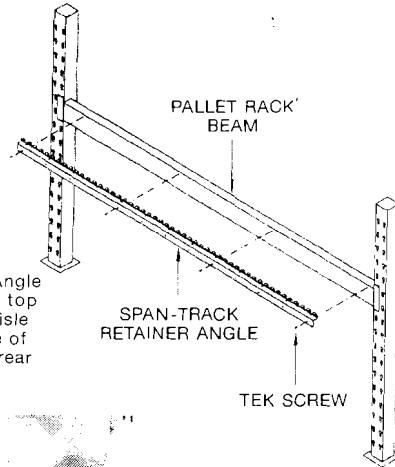
**1 SET BEAMS**

Set front pallet rack beam to desired discharge elevation. Set rear beam at higher elevation for flow (see chart).

PRODUCT	PITCH PER FOOT
Totes	3/4" to 7/8"
1-10 Lb. cartons	7/8" to 1-1/8"
10-30 Lb. cartons	7/8" to 1"
30-60 Lb. cartons	3/4" to 7/8"



Retainer Angle installs on top outside (aisle side) edge of front and rear beams



**2 ATTACH RETAINERS**

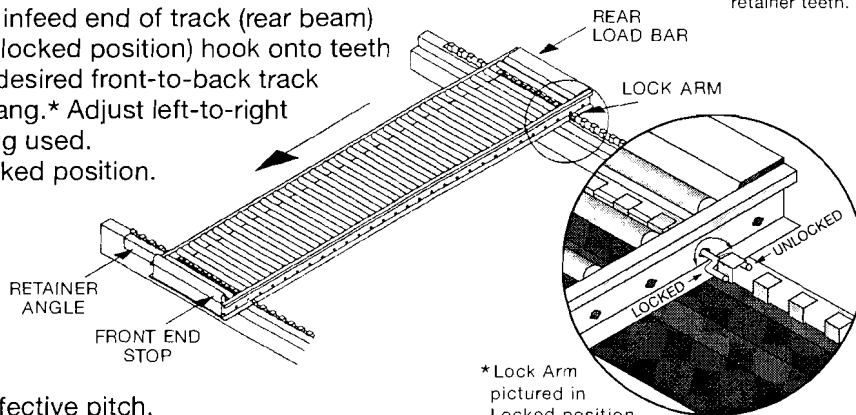
Attach pre-punched retainer angles to **outside of front and rear beams** using supplied tek screws (screws should be minimum 2 ft. o.c.)



When installing Knuckled End Span-Track, angled end of track **MUST** extend free and clear of front beam. Long, straight part of track should rest between retainer teeth.

**3 ADD TRACK**

Locate lock arm at infeed end of track (rear beam) and (with arm in unlocked position) hook onto teeth of rear retainer for desired front-to-back track position and overhang.\* Adjust left-to-right to suit cartons being used. Flip lock arm to locked position.



\* Lock Arm pictured in Locked position against retainer, and in Unlocked position outside retainer. **NOTE:** Lock Arm is repositionable through holes in side channels. Use holes at end of track for track flush with beam. Use other holes if overhang (up to recommended maximum) is desired.

**4 TEST PITCH**

Test installed track section for product flow to determine if rear beam needs readjustment for effective pitch.

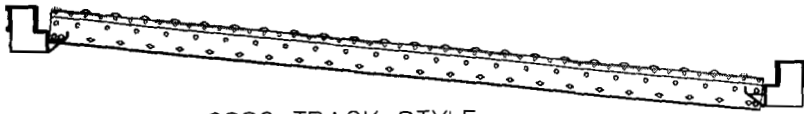
**IMPORTANT:** Track section to be tested should be loaded and allowed to sit for 24 hours. Then remove cartons at pick face and check resulting flow. This is the most reliable way to ensure proper flow for your particular products and storage environment.

**SPAN-TRACK®**

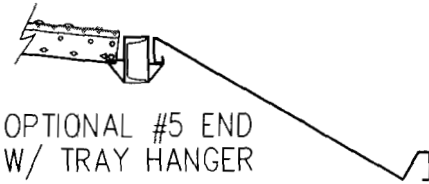
*Setting the Standard for Carton Flow*



98S0 TRACK STYLE  
HIGH-PROFILE SPAN-TRACK WITH STOP ON FRONT END,  
IMPACT BAR ON BACK END AND RETAINER ANGLE BOTH ENDS



98S2 TRACK STYLE  
LOW-PROFILE SPAN-TRACK ON HANGERS



OPTIONAL #5 END  
W/ TRAY HANGER



98S3 TRACK STYLE  
3-D LOW-PROFILE SPAN-TRACK



98S4 TRACK STYLE  
DECK-TRACK W/ STOPS ON BOTH ENDS, USE IN PUSH-BACK APPLICATIONS




98S5 TRACK STYLE  
FLOW-CELL TRACK W/ STOP ON FRONT END AND IMPACT BAR ON BACK END



98S6 TRACK STYLE  
FLOW-CELL TRAY-TRACK W/ IMPACT BAR ON BACK END  
AND TILTED PICK-TRAY ON FRONT END

THIS DRAWING IS THE PROPERTY OF UNEX  
MANUFACTURING, INC. AND IS TO BE RETURNED  
IMMEDIATELY UPON DEMAND. THE INFORMATION,  
DESIGNS, ETC., SHOWN HEREON ARE CONFIDENTIAL  
AND ARE NOT TO BE COPIED, DIVULGED OR  
SUBMITTED TO OTHERS.

	TRACK STYLES		
	Scale: NTS	Dwg. Number:	
	By: MF	Rev. Number:	
	Date: 2-17-06	Rev. Date:	